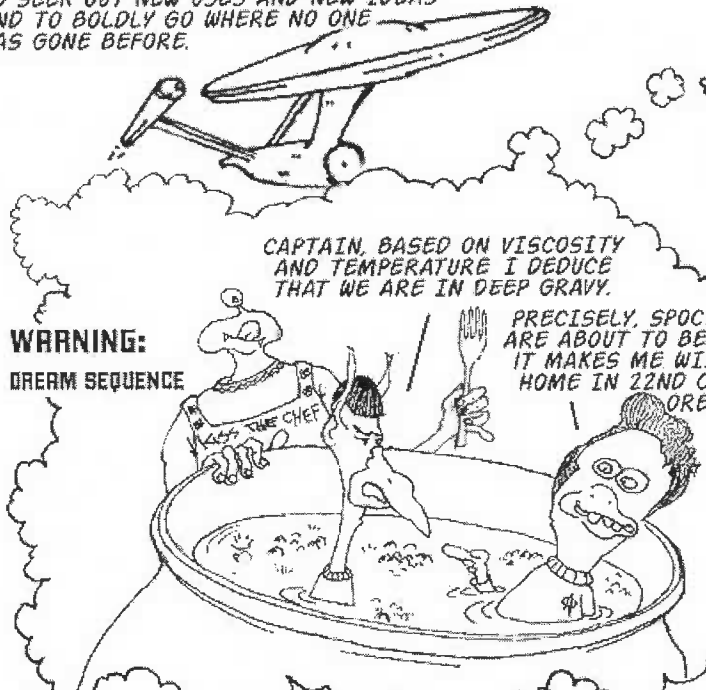


INVENTERPRISE '00

IDEAS... THE FINAL FRONTIER. THESE ARE THE VOYAGES OF THE STARSHIP INVENTERPRISE. ITS CONTINUING MISSION: TO SEEK OUT NEW USES AND NEW IDEAS AND TO BOLDLY GO WHERE NO ONE HAS GONE BEFORE.

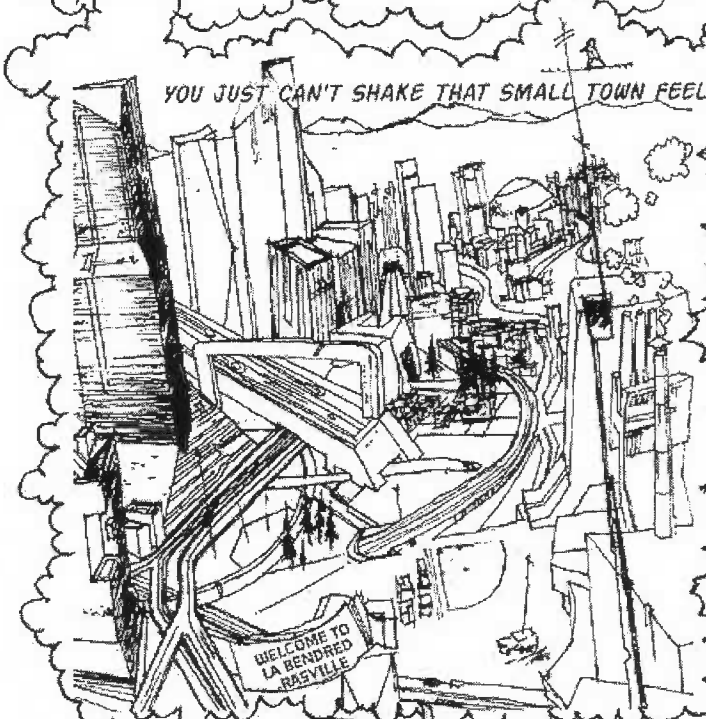
HOMESICKNESS IN THE DEPTHS OF SPACE, COUPLED WITH THE WRONG MIDNIGHT SNACK, CAN LEAD TO A LONG NIGHT...



CAPTAIN, BASED ON VISCOSITY AND TEMPERATURE I DEDUCE THAT WE ARE IN DEEP GRAVY.

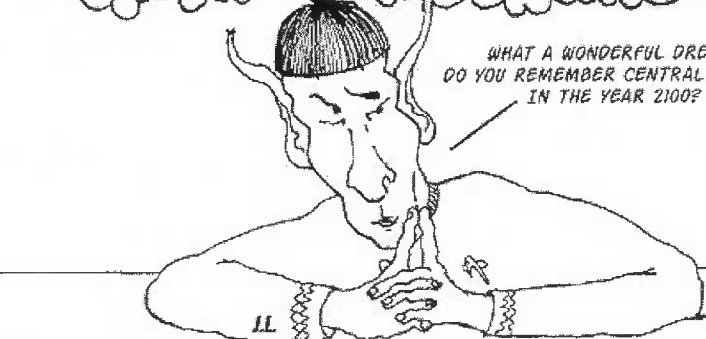
PRECISELY, SPOCK. IT APPEARS WE ARE ABOUT TO BE CHICKEN DINNER. IT MAKES ME WISH WE WERE BACK HOME IN 22ND CENTURY CENTRAL OREGON.

WARNING:
DREAM SEQUENCE

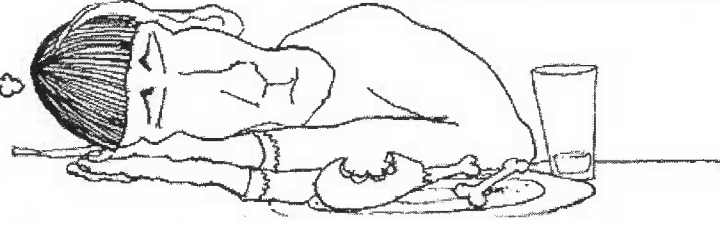


YOU JUST CAN'T SHAKE THAT SMALL TOWN FEEL...

WARNING:
THESE ARE NOT DREAM SEQUENCES BUT RATHER CUTE PUFFS OF EXHAUST.



WHAT A WONDERFUL DREAM. DO YOU REMEMBER CENTRAL OREGON IN THE YEAR 2100?



THERE ARE NO FOUL DAYS ON THIS PALTRY FARM.

OH YEAH... AND WE CAN TRAVEL TO THE CITY FOR CHEAP!

WARNING:
DREAM SEQUENCE WITHIN DREAM SEQUENCE

EGAD... THESE CHICKENS SHELL LIKE CLAY.



AND THE GREAT OUTDOORS NEVER CHANGE.

I THINK NOT. I LIVE FOR THE MOMENT.

READ ON FOR MORE INFO →

Happy 2100!

Welcome to our contest, Invention Enterprise 2000.

Here's the problem:

What will Central Oregon be like in the year 2100?

The next pages contain some ideas to help you get started.

Official Rules

1. Any K-12 student in Central Oregon may enter.
Sure, you may enter with friends (groups of 2 or 3).
2. Entries may be in any of the following formats (or think of others):
pictures, models, descriptions, computer programs, dramas, tapes.
3. All entries must be received by **5:00 p.m. Friday, November 17, 2000**, at

Bend Research, Inc.
64550 Research Road
Bend, OR 97701

4. Include your name, address, teacher, grade, and school on the entry form provided and attach it to your entry. Make as many copies as you like. Your entry will be returned to you.
5. A celebrity panel will judge entries for usefulness, originality, and just plain coolness.
Judges will be looking for well-developed ideas that do not defy the laws of nature.
6. Fabulous prizes (T-shirts) will be awarded to the top entrants.
Less-fabulous prizes will be awarded for good efforts.
7. Winners will be announced by December 1, 2000.
8. Have fun!

For more information, call Kathy at 382-0212, ext. 172, or Kevin at 382-0212, ext. 140.

Topics To Consider

Agriculture	How will agriculture support our increased population?
Energy	What new ways have been developed to generate the energy needed to meet increased power demands?
Housing	How do people live?
Transportation	How do people move in and between the cities of Central Oregon?
Medicine	What innovations would you find at St. Charles Medical Center?
Natural Resources	How are we managing our lands, water, and air?
Economics & Jobs	What new employment opportunities will emerge? What occupations will replace what we have now?
Technology	What gadgets will make our lives different?
Community	What is the population of Central Oregon? What do the cities look like?
Education	How will schools in 2100 be different from schools today?
Communication	What new technologies will be used to move and store information?

Choose one of these topics or many! Or invent your own topic!

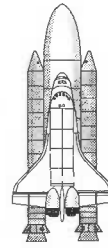
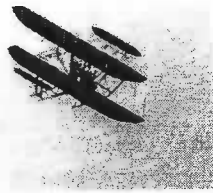
Inventerprise 2000 Entry Form

Grade _____	School _____
Student Name _____	Teacher _____
_____	Entry Title _____
_____	_____

Please cut out and firmly attach this entry form to your contest entry

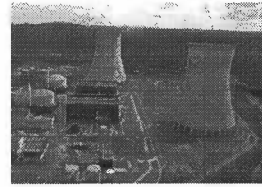
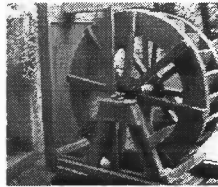
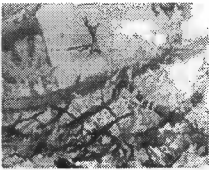
Past, Present, and Future

Flight



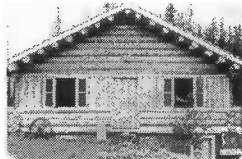
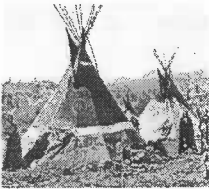
2100?

Energy



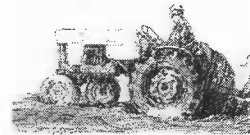
2100?

Housing



2100?

Agriculture



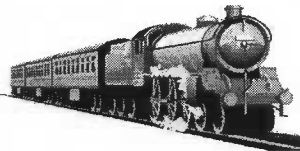
2100?

Communication



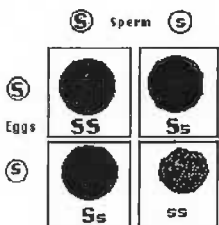
2100?

Travel

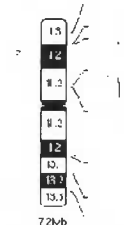


2100?

Genetics



MENDEL GENETICS



2100?

DNA

GENE MAPPING PROJECT